

## / MapMedia Charts



At a time when electronic charts can replace paper charts as the official charts, the choice is very important. MapMedia currently proposes a complete range of maritime charts for MaxSea Time Zero (.mm3d format) with a range of Raster charts and, as a new fea-

ture, a range of Vector charts. These MapMedia Vector charts are "DATACORE BY Navionics". They combine the expertise of Navionics, one of the largest specialists in the world in Vector nautical charts, with the know-how of MapMedia.

## / How to choose your chart?



### The Raster charts:

#### The +

If you have always used "paper" navigation, you switch to digital navigation while keeping your reference points.

**Reliability:** a true color photocopy of the official paper charts of the Hydrographic Services.

#### The -

Pixels appear on over zoom.



### The Vector charts:

#### The +

**Dynamic aspect:** the lighthouses, buoys, and coastlines are objects that are digitally-linked and managed via a database.

Possibility of customizing the charts and of filtering data.

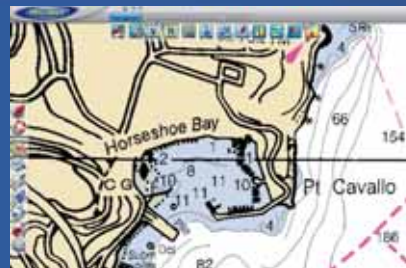
#### The -

Reliability issue

## / MapMedia .mm3d Data

More than simple maritime charts, MapMedia provides **complete packaged data**. Each .mm3d area consistently includes:

### Detailed Raster or Vector charts



High quality charts, 3D data and satellite photos are fused to give you the best nautical information. The MapMedia data become a navigational aid tool with incredible performance: seamless charts, photofusion, and 3D with unique speed.

### 3D data



### Strong points:

- Exceptional coverage. MapMedia Raster and Vector charts catalog offers you an excellent coverage all around the world.
- Accuracy: all MapMedia charts are very precise, clear and detailed. For a given Raster zone, all of the charts and details of the hydrographic offices paper charts are included.
- Complete data: for a give area, all charts, 3D and satellite photos are included.

### Satellite photo



## / MapMedia catalog

Nautical charts for MaxSea  
Time Zero (.mm3d) and NAVnet 3D

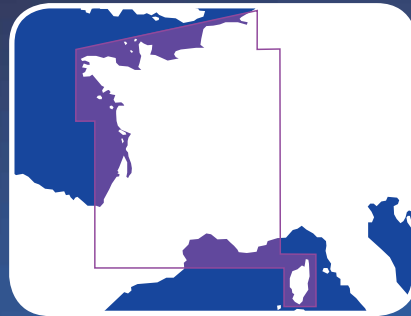


### ■ Iberia

**R31P-MAP:** Raster charts,  
3D Data, Satellite Pictures.

**V31P-MAP:** Vector charts,  
3D Data, Satellite Pictures.

**31P-CRT:** High Quality Stream Data.

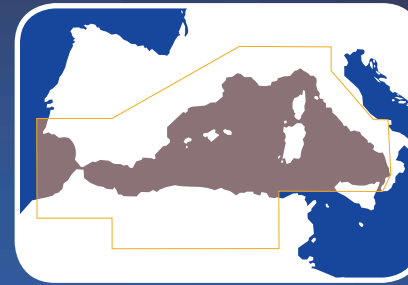


### ■ France

**R26P-MAP:** Raster charts,  
3D Data, high resolution Satellite  
Pictures.

**V26P-MAP:** Vector charts,  
3D Data, high resolution Satellite  
Pictures.

**26P-CRT:** High Quality Stream Data.

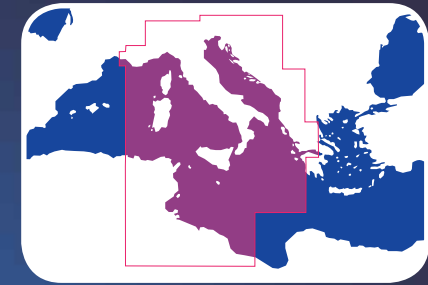


### ■ West Mediterranean Sea

**R32P-MAP:** Raster charts,  
3D Data, Satellite Pictures

**V32P-MAP:** Vector charts,  
3D Data, Satellite Pictures.

**32P-CRT:** High Quality Stream Data.



### ■ Central Mediterranean Sea

**R33P-MAP:** Raster charts,  
3D Data, Satellite Pictures

**V33P-MAP:** Vector charts,  
3D Data, Satellite Pictures.

**33P-CRT:** High Quality Stream Data.

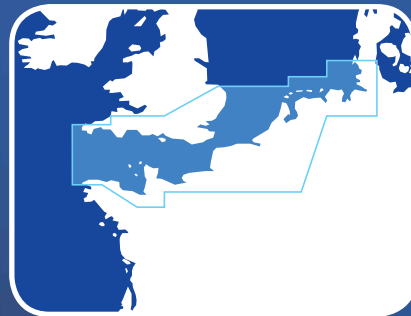


### ■ UK and Ireland

**R28P-MAP:** Raster charts,  
3D Data, Satellite Pictures.

**V28P-MAP:** Vector charts,  
3D Data, Satellite Pictures.

**28P-CRT:** High Quality Stream Data.

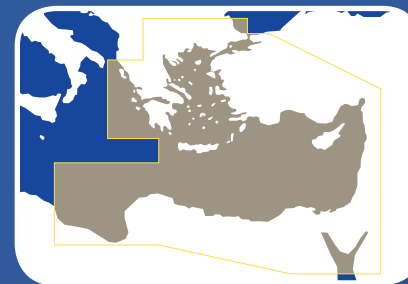


### ■ South UK - Hamburg

**R25P-MAP:** Raster charts,  
3D Data, Satellite Pictures.

**V25P-MAP:** Vector charts,  
3D Data, Satellite Pictures.

**25P-CRT:** High Quality Stream Data.



### ■ East Mediterranean Sea

**R34P-MAP:** Raster charts,  
3D Data, Satellite Pictures.

**V34P-MAP:** Vector charts,  
3D Data, Satellite Pictures.



### ■ Black Sea

**R35P-MAP:** Raster charts,  
3D Data, Satellite Pictures.

**V35P-MAP:** Vector charts,  
3D Data, Satellite Pictures.

Areas displayed are for guidance only and do not  
reflect exact coverage. Areas available in 2008.

Updated online catalog and list of detailed areas  
available on [www.maxsea.com](http://www.maxsea.com)

Vector charts "DATACORE BY NAVIONICS™"

## / MapMedia catalog

Nautical charts for MaxSea  
Time Zero (.mm3d) and NAVnet 3D



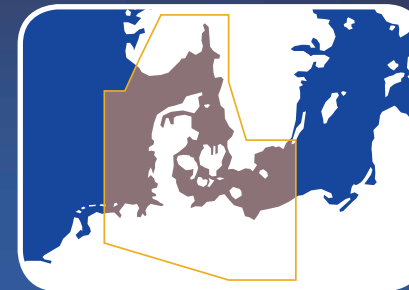
### ■ Norway North West

**V11P-MAP:** Vector charts,  
3D Data, Satellite Pictures.



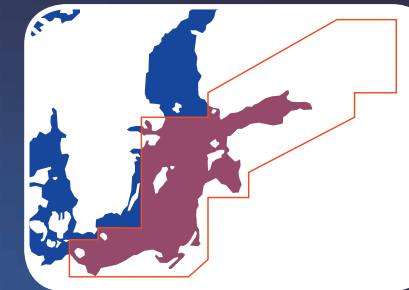
### ■ Norway South West

**V12P-MAP:** Vector charts,  
3D Data, Satellite Pictures.  
**12P-CRT:** High Quality Stream Data.



### ■ From Oslo to Denmark

**R15P-MAP:** Raster charts,  
3D Data, Satellite Pictures  
(except Norwegian coasts).  
**V15P-MAP:** Vector charts,  
3D Data, Satellite Pictures.  
**15P-CRT:** High Quality Stream Data.



### ■ Baltic South

**R16P-MAP:** Raster charts,  
3D Data, Satellite Pictures.  
**V16P-MAP:** Vector charts,  
3D Data, Satellite Pictures.



### ■ Sweden East coast

**R13P-MAP:** Raster charts,  
3D Data, Satellite Pictures.  
**V13P-MAP:** Vector charts,  
3D Data, Satellite Pictures.



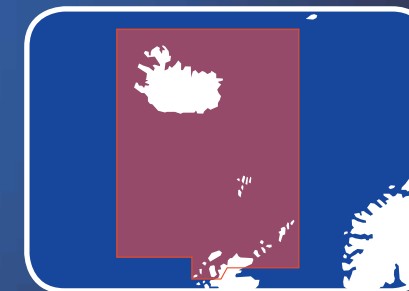
### ■ South Sweden

**R17P-MAP:** Raster charts,  
3D Data, Satellite Pictures.  
**V17P-MAP:** Vector charts,  
3D Data, Satellite Pictures.  
**17P-CRT:** High Quality Stream Data.



### ■ Finland

**R14P-MAP:** Raster charts,  
3D Data, Satellite Pictures.  
**V14P-MAP:** Vector charts,  
3D Data, Satellite Pictures.



### ■ Iceland

**R22P-MAP:** Raster charts,  
Satellite Pictures.  
**V22P-MAP:** Vector charts,  
Satellite Pictures.

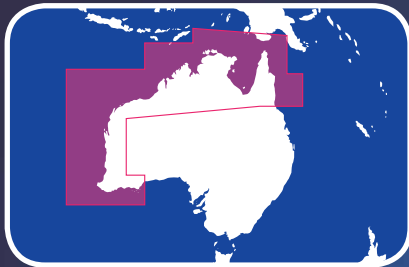
Areas displayed are for guidance only and do not  
reflect exact coverage. Areas available in 2008.

**Updated online catalog and list of detailed areas  
available on [www.maxsea.com](http://www.maxsea.com)**

Vector charts "DATACORE BY NAVIONICS™"

## / MapMedia catalog

Nautical charts for MaxSea  
Time Zero (.mm3d) and NAVnet 3D



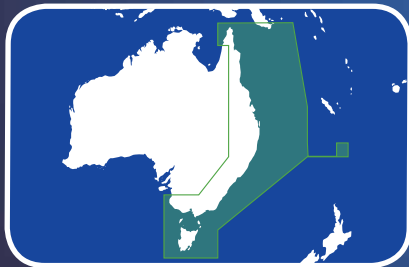
### ■ Australia North and East coasts

**R60P-MAP:** Raster charts, 3D Data, Satellite Pictures.



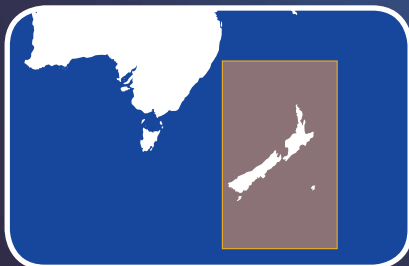
### ■ South Australia

**R61P-MAP:** Raster charts, 3D Data, Satellite Pictures.



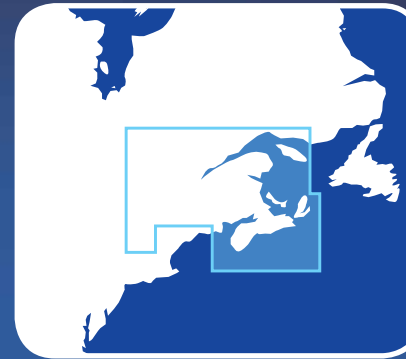
### ■ Australia East coasts

**R62P-MAP:** Raster charts, 3D Data, Satellite Pictures.



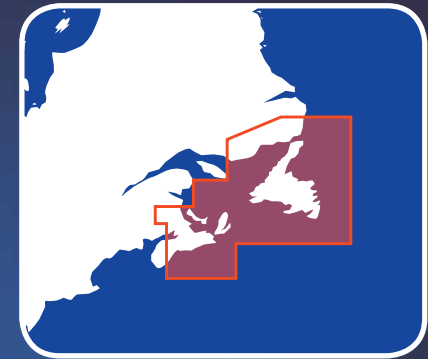
### ■ New Zealand

**R64P-MAP:** Raster charts, 3D Data, Satellite Pictures.



### ■ Canada St Lawrence river

**V902P-MAP:** Vector charts, 3D Data, Satellite Pictures.



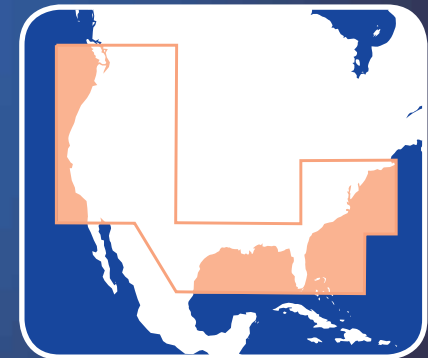
### ■ Canada New Found Land

**V903P-MAP:** Vector charts, 3D Data, Satellite Pictures.



### ■ Canada Vancouver island

**V913P-MAP:** Vector charts, 3D Data, Satellite Pictures.



### ■ USA

**USA charts:** refer to the web site.

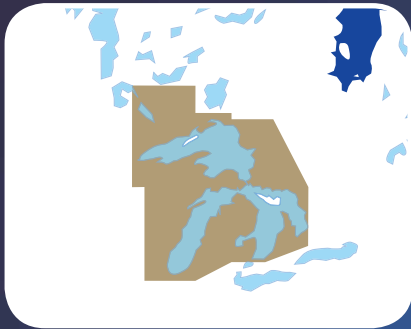
Areas displayed are for guidance only and do not reflect exact coverage. Areas available in 2008.

**Updated online catalog and list of detailed areas available on [www.maxsea.com](http://www.maxsea.com)**

Vector charts "DATACORE BY NAVIONICS"

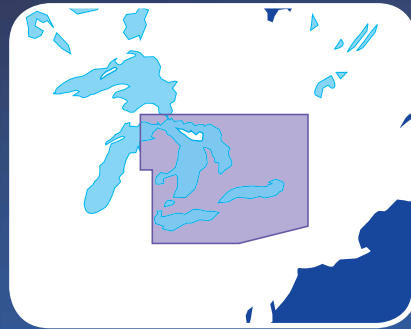
# / MapMedia catalog

Nautical charts for MaxSea  
Time Zero (.mm3d) and NAVnet 3D



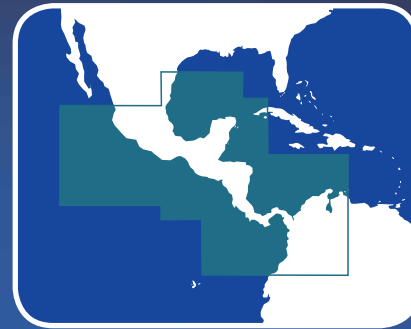
## ■ West Great Lakes

**V900P-MAP:** Vector charts, 3D Data, Satellite Pictures.



## ■ East Great Lakes

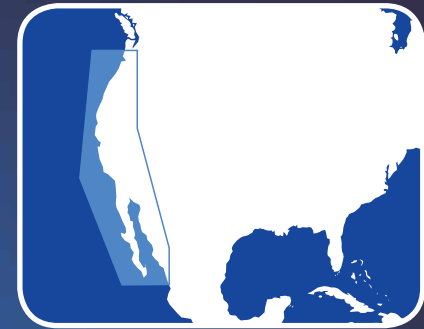
**V901P-MAP:** Vector charts, 3D Data, Satellite Pictures.



## ■ Central America

**R911G-MAP:** Raster charts, 3D Data, Satellite Pictures.

**V911G-MAP:** Vector charts, 3D Data, Satellite Pictures.



## ■ USA - Mexico West Coast

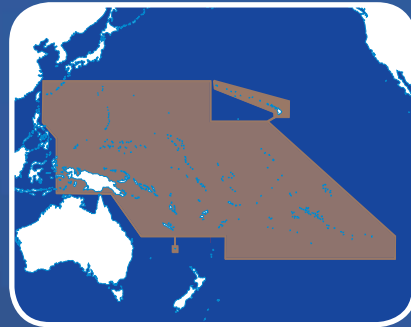
**R912P-MAP:** Raster charts, 3D Data, Satellite Pictures.

**V912P-MAP:** Vector charts, 3D Data, Satellite Pictures



## ■ South East United States - Florida - Bahamas

**V906P-MAP:** Vector charts, 3D Data, Satellite Pictures.



## ■ Pacific Hawaiian Islands

**R70G-MAP:** Raster charts, 3D Data, Satellite Pictures.

**V70G-MAP/01:** Vector charts, 3D Data, Satellite Pictures.



## ■ Caribbean

**R908G-MAP:** Raster charts, 3D Data, Satellite Pictures.

**V908G-MAP:** Vector charts, 3D Data, Satellite Pictures.

Areas displayed are for guidance only and do not reflect exact coverage. Areas available in 2008.

Updated online catalog and list of detailed areas available on [www.maxsea.com](http://www.maxsea.com)

Vector charts "DATACORE BY NAVIONICS"